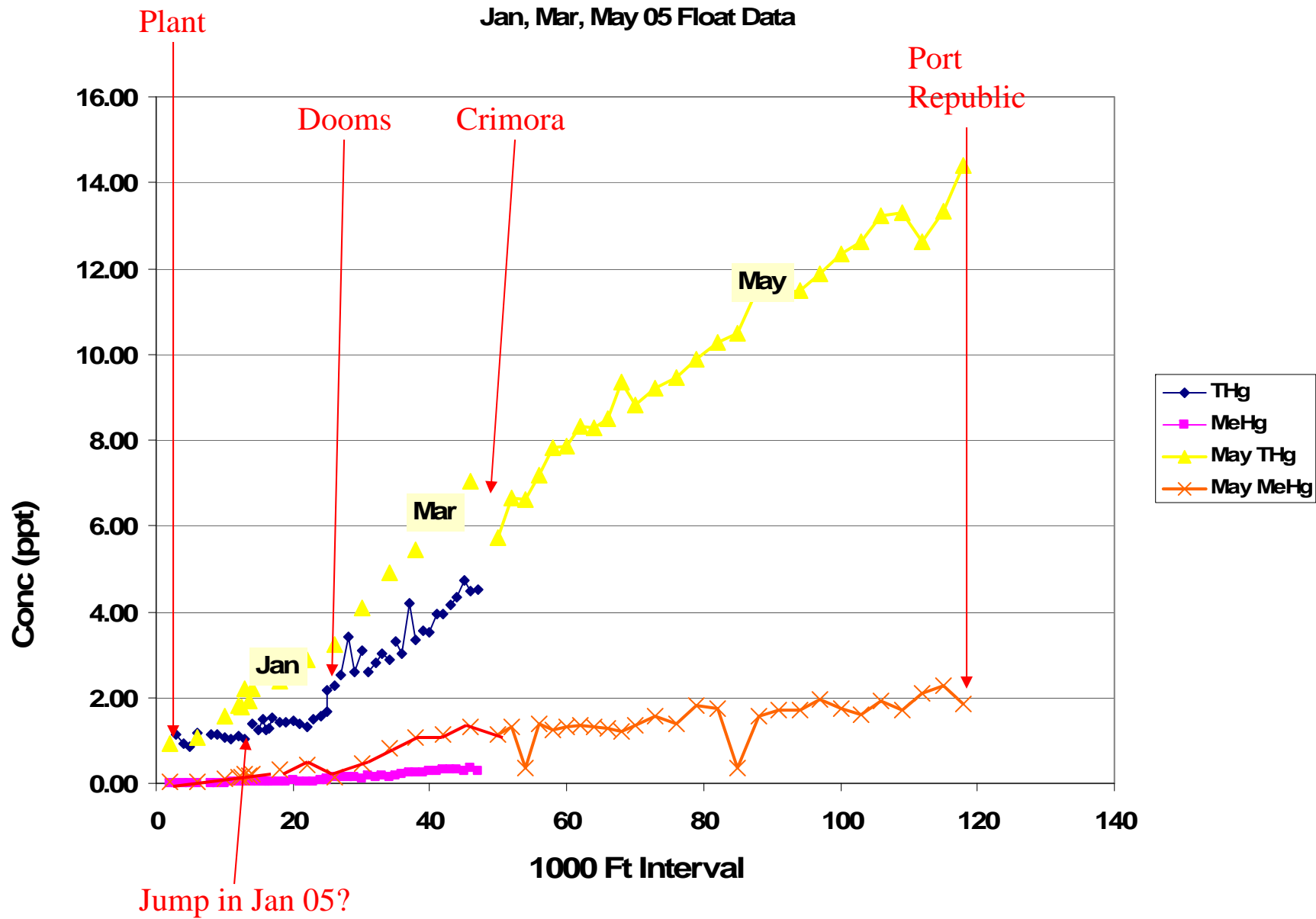


Close Interval Surface Water Sampling

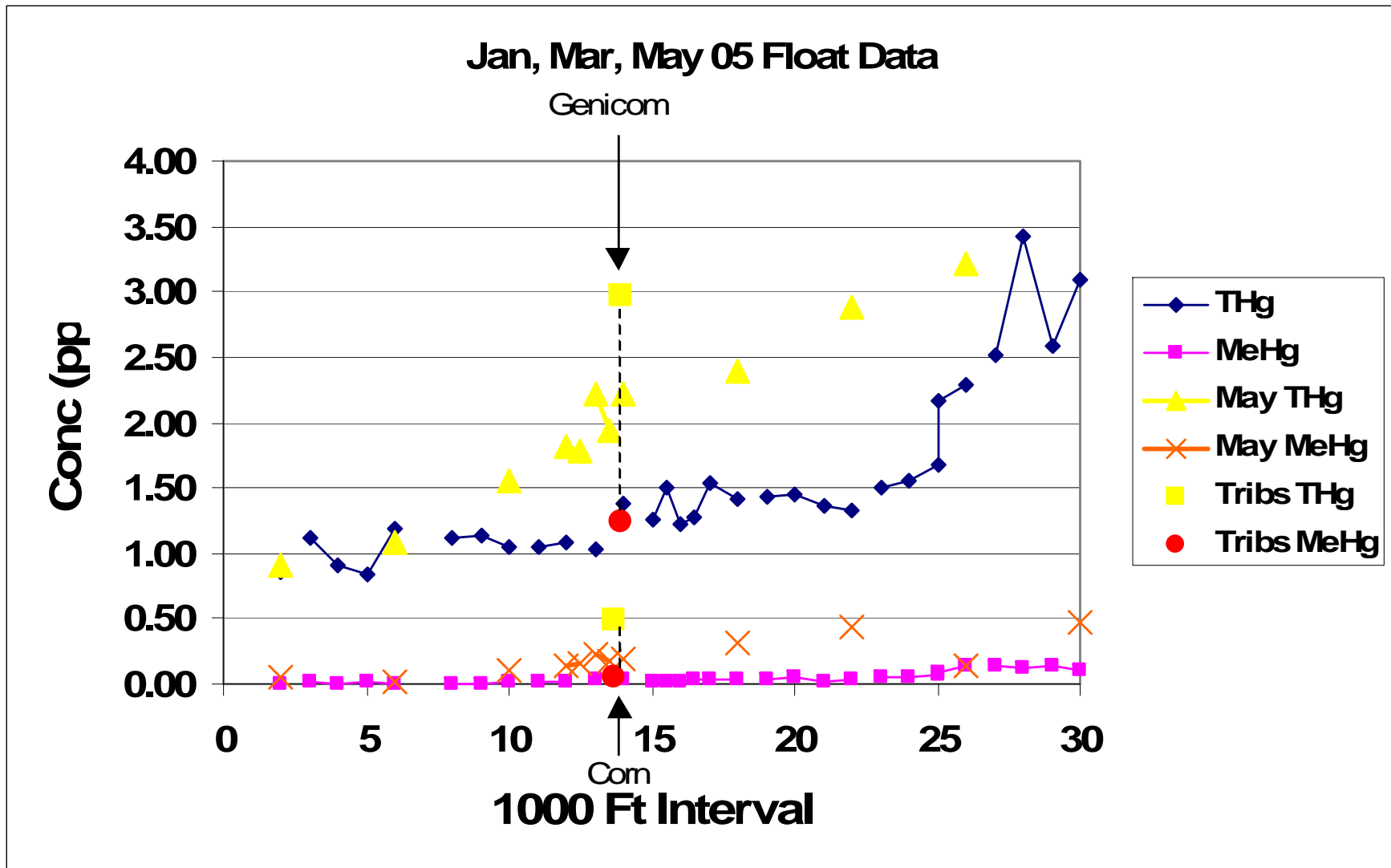
January - May 2005

2005 Close Interval SW Sampling Events

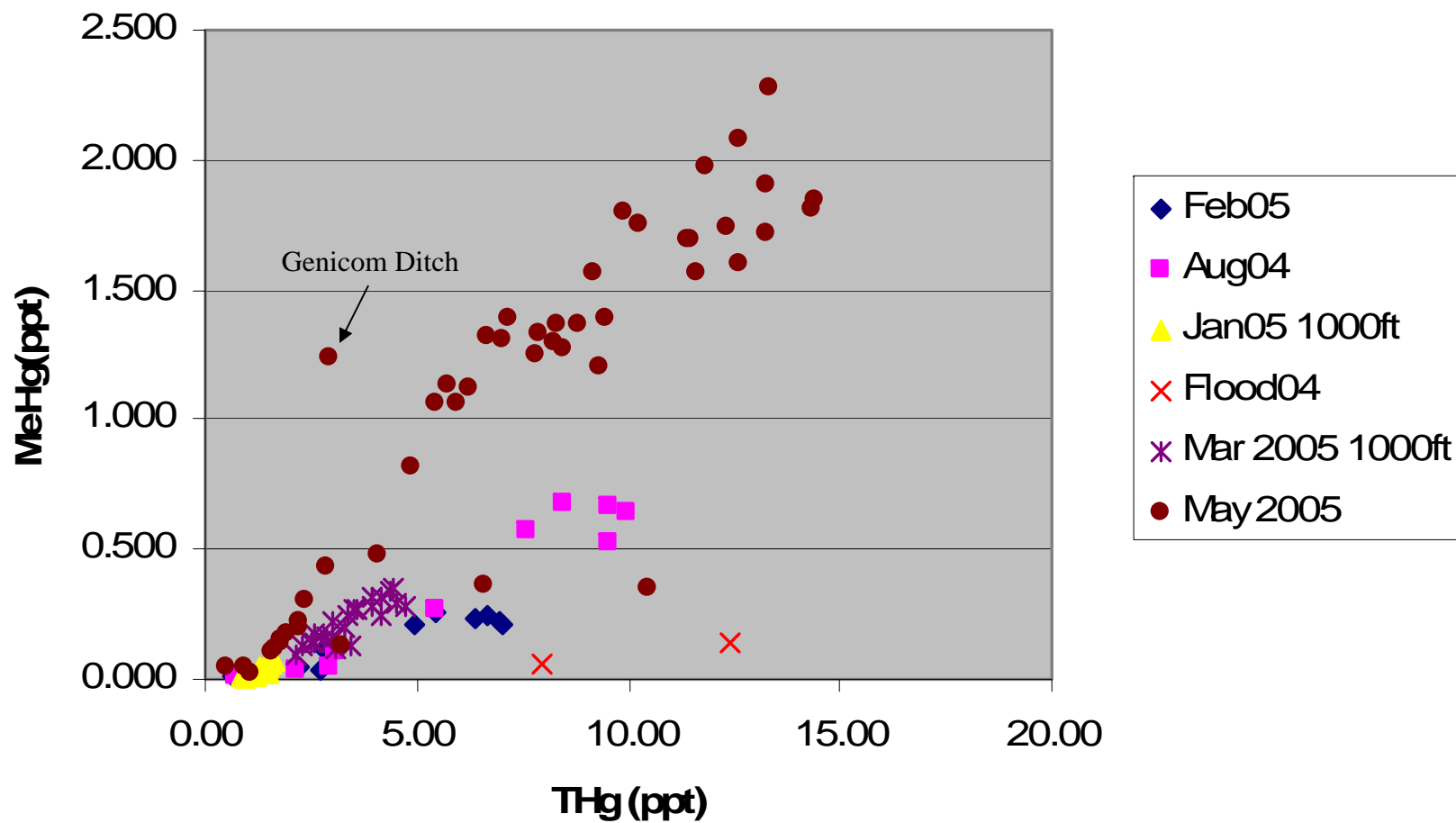
- January: 500-1000 ft interval, Plant to Dooms
- March: 1000 ft interval, Dooms to Crimora
- May: 500-4000 ft interval, Plant to Port Republic. Special focus near Hopeman Pkwy.
- All samples were for dissolved THg & MeHg



Zoom in on Hopem to Genicom



MeHg vs THg (Diss)



Close Interval SW Indications

- Gradual rise in dissolved THg/MeHg along entire river. Few if any key areas of input.
- Rate of rise in dissolved THg increases slightly with seasonal *temperature*.
- Rate of rise in dissolved MeHg increases dramatically with seasonal *temperature*. Rate decreases beyond Crimora in Spring..
- Could not duplicate suspected key input of THg between Hopeman and Genicom.

Italics denote unproven hypothesis.