

# Proposed Floodplain Sampling

# Objectives

- To develop an understanding of floodplain as source or sink to total and methyl Hg into the South River

# Plan

- 6 reaches defined by bridge crossings
- 3 inundation levels
  - 0-2 year
  - 2-5 year
  - 5-62 year

# Plan

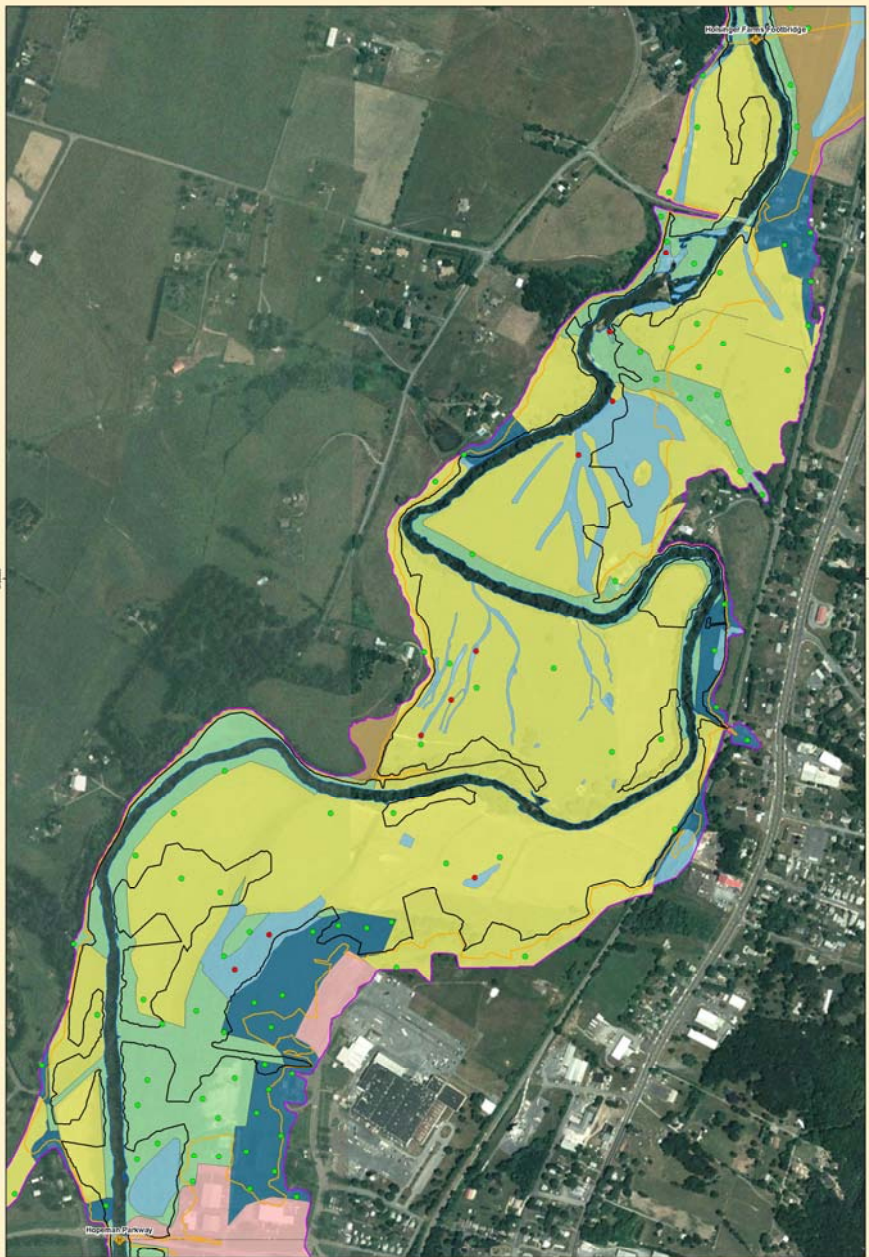
- 30 samples per reach and inundation area, at least 10 samples by reach and inundation area for a particular land use (forest, crop land, open space)
- Wetlands
  - 10 wetland samples/reach (pseudo-randomly chosen)

# Sample collection

- 2 foot composite samples
- Measure total Hg using Lumex
- 10% confirmation by laboratory analysis
- From each site a surface to 6 inch sample and a 6-24 inch sample will be archived for future Hg analysis.

# Total Samples

- Sample collection and initial analysis: 600
- Archived samples: 1200



Legend	
●	Proposed Inundation Samples
●	Proposed Wetland Samples
○	Bridges
○	2-Year Floodplain
○	5-Year Floodplain
○	10-Year Floodplain
○	Wetlands
○	River Shoreline
○	Cultivated Crops
○	Developed, High Intensity
○	Forest
○	Open Space
○	Recreational
○	Wetlands

### Hopsman Parkway Bridge to Holsinger Farms Footbridge Proposed Inundation Level & Wetlands Sampling

URS Corporation - Fort Washington  
September 2017  
Source: LIDAR, 2008 NAIP Imagery  
ESRI Data & Maps CD  
Custom URS Data  
Created in ArcGIS 9 using ArcToolbox  
© 2017 URS Corporation  
All rights reserved.  
No warranty is made by URS Corporation for the use of the information contained herein for purposes not intended by URS Corporation.

N

1 inch equals 300 feet

**URS**