

Database Update

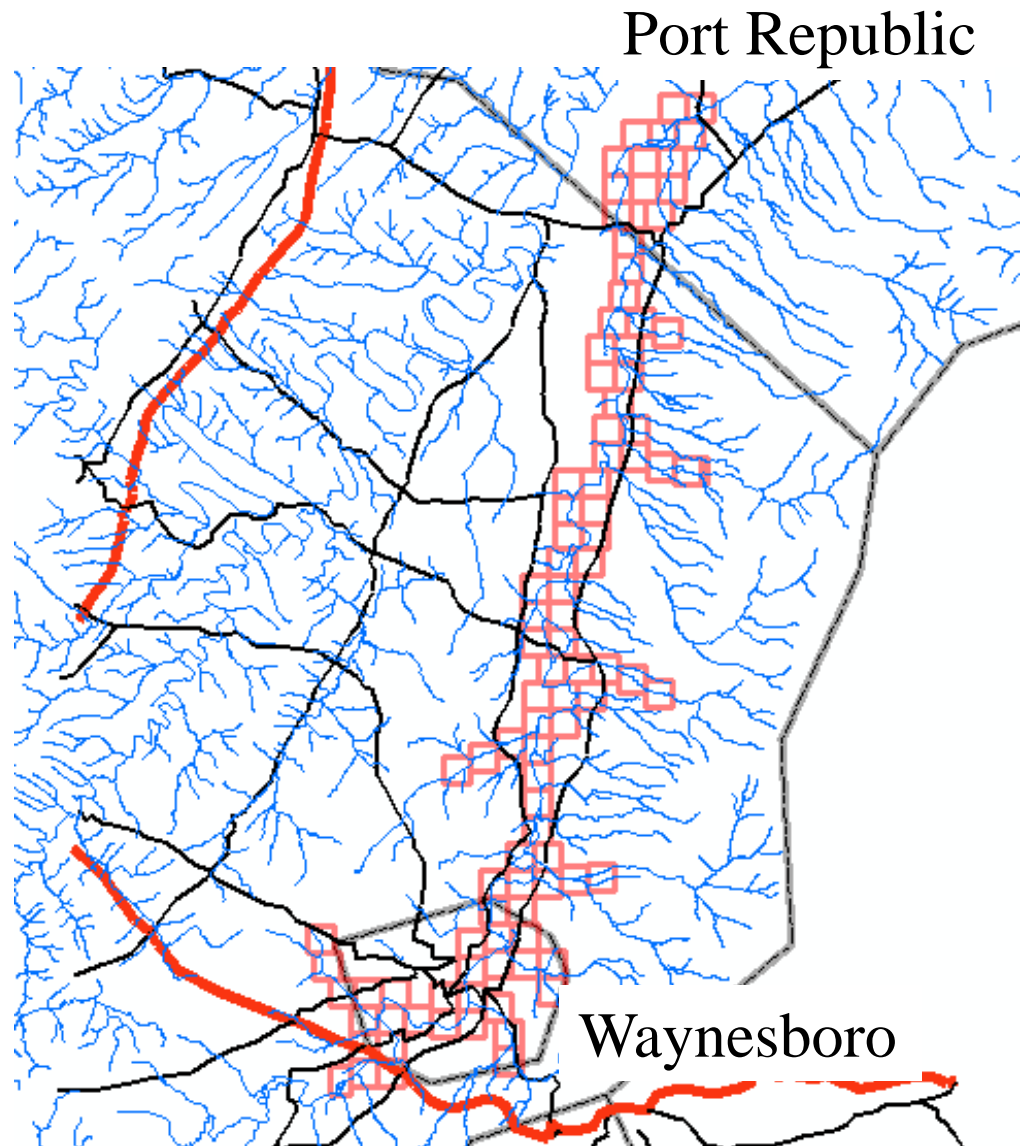
South River Science Team Meeting
October 18, 2005

Database Progress

- GIS project is set-up
- All metadata from historical reports in database
- Transfer of SRST data to database substantially complete
 - Locations being QC'ed
- Ortho-rectified historical aerials from EPA in database
- Working with UD to get geomorphic mapping into database

Database Progress

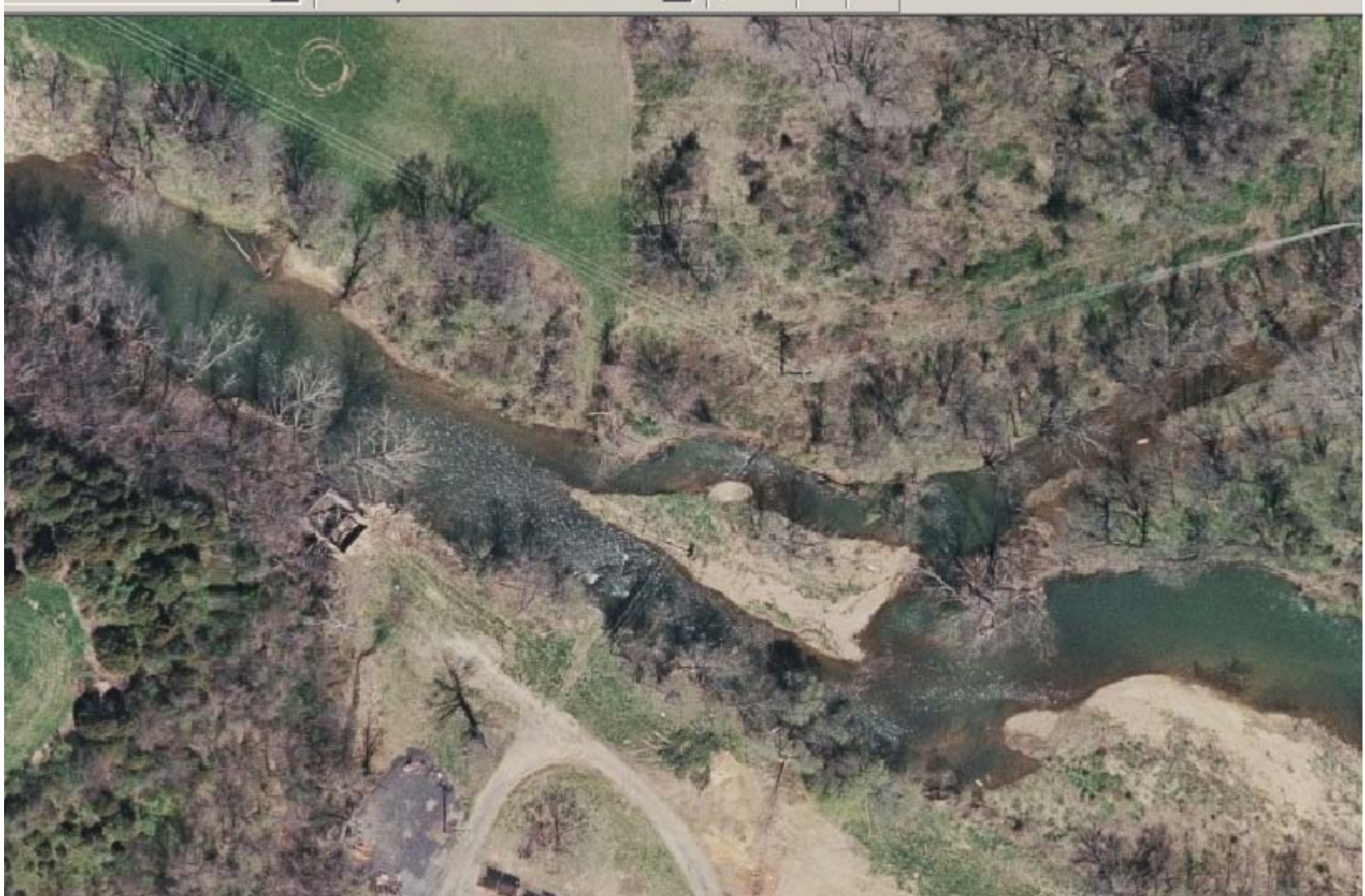
- Aerial survey complete - topo and ortho-photos
 - 0.5 ft resolution
 - 2 GB of TIFFs, available now on DVD
 - Working to get smaller MrSIDs format



Example aerial photo



Example aerial photo



Database Progress

- Working with SiteVison, Inc. to develop web-based GIS application similar to “Water Window”
 - public access - limited data viewing and pdf down-loading only
 - SRST users
 - username/password log-in access
 - on-screen mapping and graphing of data
 - visualize data by project, depth, analyte, etc...
 - export of data to local computer as excel, text file, etc...
 - SRST ArcView users - access data directly through URL
- Beta version end of year

Standardized Future Field Data Collection Procedures

- Future sample station IDs based on river mile
 - Relative river mile – 0.0 at footbridge
- Data template
 - Meta-data and location data
 - Excel format
- Handheld GIS / GPS unit
 - Aerial photos
 - Planned and historic sample locations
 - Station IDs