

South River Science Team Database Update

Former DuPont Waynesboro Site, Virginia
Area of Concern (AOC) 4



April 5, 2016

AECOM

Agenda

- Objectives
- Current State of Data
- Database (EIM) Customization
- Schedule

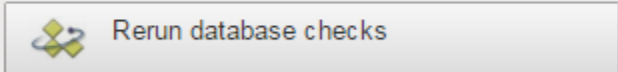
Objectives

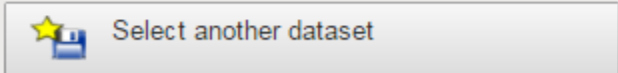
- Create a data repository for all project data
 - Analytical and field data from chemical, physical, and biological sources
 - Spatial data (floodplain outlines, land use, etc.)
 - Documents such as metadata/RDQAs
- Accessible to multiple stakeholders

Current State of Data

Dataset Status:
 Initial Records: 2221
 Errors: 0

Manual Review Status: ([Reset](#))
 Awaiting review
 Check here if review has been completed

 Rerun database checks

 Select another dataset

- AECOM Excel XY data uploaded to EIM
- Excel data files are being prepped for upload
- Compilation of researcher data is on-going and being evaluated for best storage options
 - Accessibility for common user
 - likely SRST website

 **SUCCESS!** 2,129 records have been updated in EIM.

| Table Name | Updated Record Count |
|------------|----------------------|
| LOCATION | 2129 |

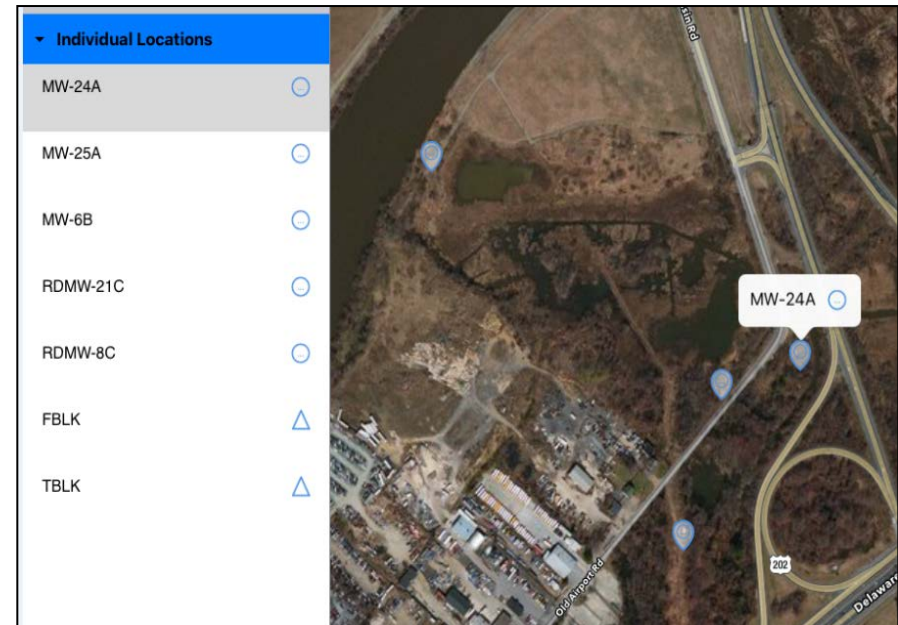
Database (EIM) Customization

| Field Name | Status |
|-------------------------------|---------------------------------------|
| BAND_OR_TAG_NO | Existing Biological Sample Table |
| BIOLOGICAL_SAMPLE_COMMENTS | Existing Biological Sample Table |
| BIOLOGICAL_SAMPLE_DETAIL | Existing Biological Sample Table |
| COLLECTION_LOCATION_DESC | Existing Biological Sample Table |
| FIELD_SAMPLE_ID | Existing Biological Sample Table |
| FUNCTIONAL_FEEDING_GROUP | Existing Biological Sample Table |
| LAST_MODIFIED_BY | Existing Biological Sample Table |
| LAST_MODIFIED_DATE | Existing Biological Sample Table |
| NEST_BOX_NO | Existing Biological Sample Table |
| SITE_ID | Existing Biological Sample Table |
| SPECIMEN_CATEGORY | Existing Biological Sample Table |
| SPECIMEN_SAMPLE_TYPE | Existing Biological Sample Table |
| TAXONOMIC_ID | Existing Biological Sample Table |
| TROPHIC_POSITION | Existing Biological Sample Table |
| STUDY_GROUP | New Field - Field Sample Table |
| POINT_OF_CONTACT | New Field - Field Sample Table |
| BIOLOGICAL_SAMPLE_DETAIL | New Field - Biological Sample Table |
| NEST_BOX_NO | New Field - Biological Sample Table |
| BAND_OR_TAG_NO | New Field - Biological Sample Table |
| COLLECTION_LOCATION_DESC | New Field - Biological Sample Table |
| FUNCTIONAL_FEEDING_GROUP | New Field - Biological Sample Table |
| TROPHIC_POSITION | New Field - Biological Sample Table |
| SPECIMEN_CATEGORY | New Field - Biological Sample Table |
| TAXONOMIC_ID | New TAXON Table |
| COMMON_NAME | New TAXON Table |
| SCIENTIFIC_NAME | New TAXON Table |
| TAXONOMIC_CLASS | New TAXON Table |
| TAXONOMIC_ORDER | New TAXON Table |
| TAXONOMIC_FAMILY | New TAXON Table |
| TAXONOMIC_GENUS | New TAXON Table |
| FIELD_SAMPLE_ID | New BIOLOGICAL_SAMPLE_ATTRIBUTE Table |
| BIOLOGICAL_ATTRIBUTE | New BIOLOGICAL_SAMPLE_ATTRIBUTE Table |
| BIOLOGICAL_ATTRIBUTE_VALUE | New BIOLOGICAL_SAMPLE_ATTRIBUTE Table |
| BIOLOGICAL_ATTRIBUTE_UNITS | New BIOLOGICAL_SAMPLE_ATTRIBUTE Table |
| BIOLOGICAL_ATTRIBUTE_COMMENTS | New BIOLOGICAL_SAMPLE_ATTRIBUTE Table |

- AECOM maintains biological data in Excel
- Customization request was based on fields in Excel files not included in EIM
- Locus proposed new fields and tables for storing data efficiently
- When new fields are available, existing data from Excel will be uploaded in manageable “chunks”

Database (EIM) Customization

- Customization includes mobile app upgrades
- Teams will be able to collect sample data, field measurements and biological data on iPad
- Data collected in the mobile app is uploaded directly to EIM, eliminating external Excel files



Schedule

- EIM customization – due to be rolled out 4/30/16
- Upload data from existing biota file – 6/24/16
- Test creating out-put for biota data – 7/29/16
- Test mobile app (biota data collection) – 7/29/16
- Add spatial layers - when EIM functionality becomes available
- Determine functionality of SRST website for common user
 - 7/29/16

Thank You

Christine.Wallace@aecom.com

South River Science Team

April 5, 2016



AECOM