

Carolina Wren Sampling

Greg Shriver¹, Solny Adalsteinsson^{1,2}, and Liz Tymkiw¹

1. *University of Delaware, Department of Entomology and Wildlife Ecology, Newark, Delaware 19716*
2. *Tyson Research Center, Washington University in St. Louis, Eureka, Missouri, 63025*



Carolina Wren (*Thryothorus ludovicianus*)

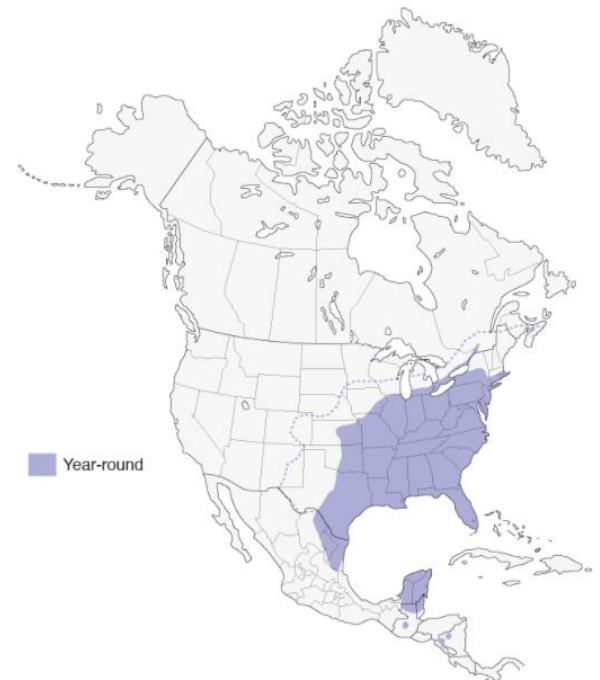
Carolina Wren Life-history

A small bird with rusty upperparts, cinnamon underparts, a distinct white eye-stripe

Males and females identical in plumage, but males are slightly heavier and have longer bills, wings, and legs

Year-round resident (non-migratory)

Strongly philopatric - maintains territories and pair bonds year-round



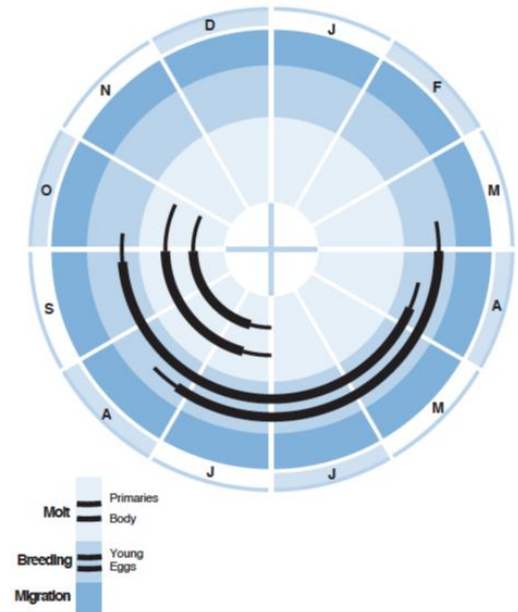
Carolina Wren Life-history

Pair Formation – can occur in fall of hatching year and before male acquires territory. Pair maintained year-round until mate dies or is possibly displaced then new pair bond is formed.

Nest Construction – by both male and female

Clutch Size - typically 4 eggs; only female incubates (15 days)

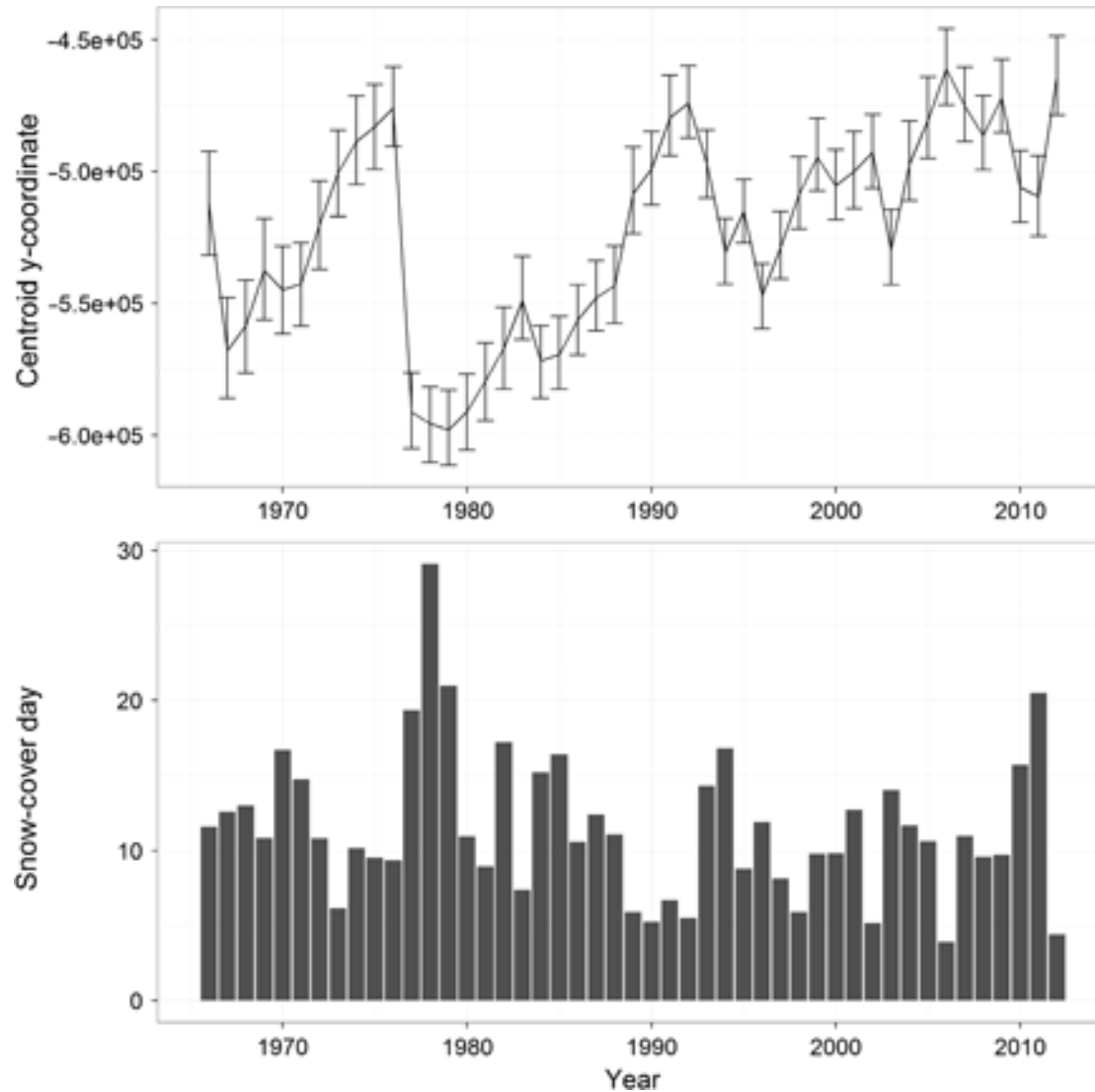
Young birds – altricial, males and females feed; young leave nests after 13 – 14 days



(Morton 1982, Laskey 1950)

Population Regulation

Annual Survival & Snow Cover / Winter temps

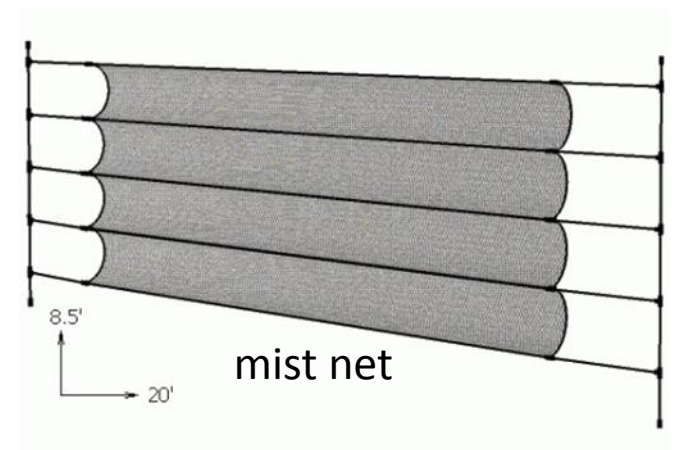


Carolina Wren Sampling Methods

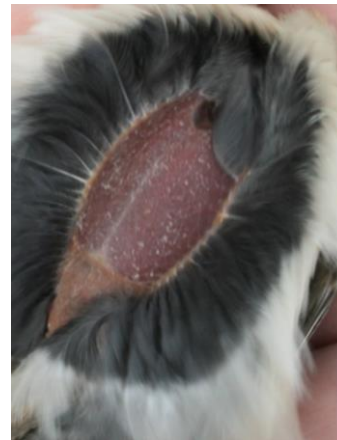
Territorial birds captured June – July using playback recordings and mist nets

Sexes identified by the presence of a cloacal protuberance (male) or brood patch (female)

Age determined by tail feather coverts



cloacal protuberance (male)



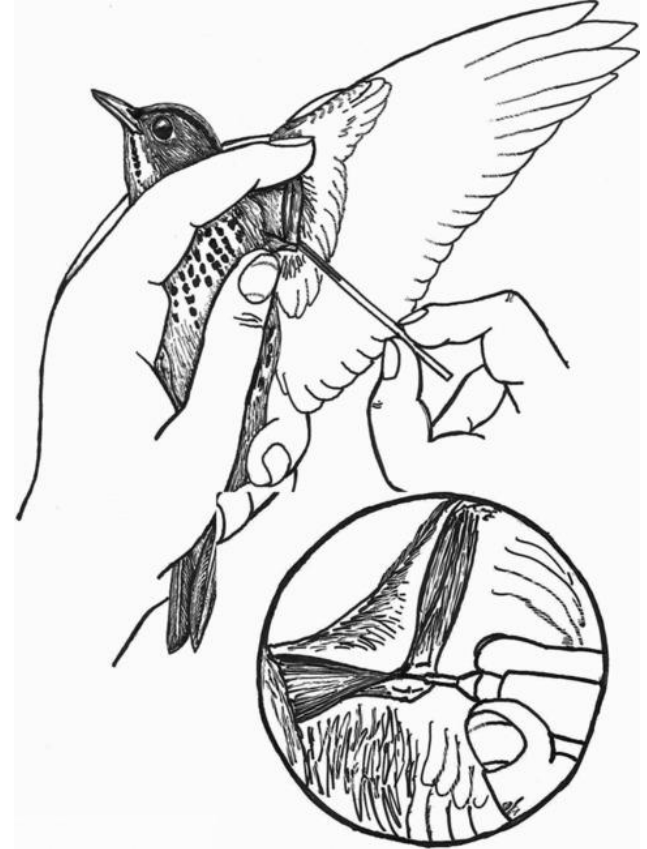
brood patch (female)

Carolina Wren Sampling Methods

We used 26- to 28-gauge needles to puncture the cutaneous ulnar vein of the wing and collected blood in heparinized capillary tubes

Tubes were placed in 10-cm³ plastic tubes for protection and placed on ice in a cooler and they were frozen at -25°C within 6 h of collection

We banded wrens with a USFWS Band



Carolina Wren Sampling Locations

2015 - 2017

Nine sites total:

2 reference

-6.2

-2.7

7 treatment

2.0

11.8

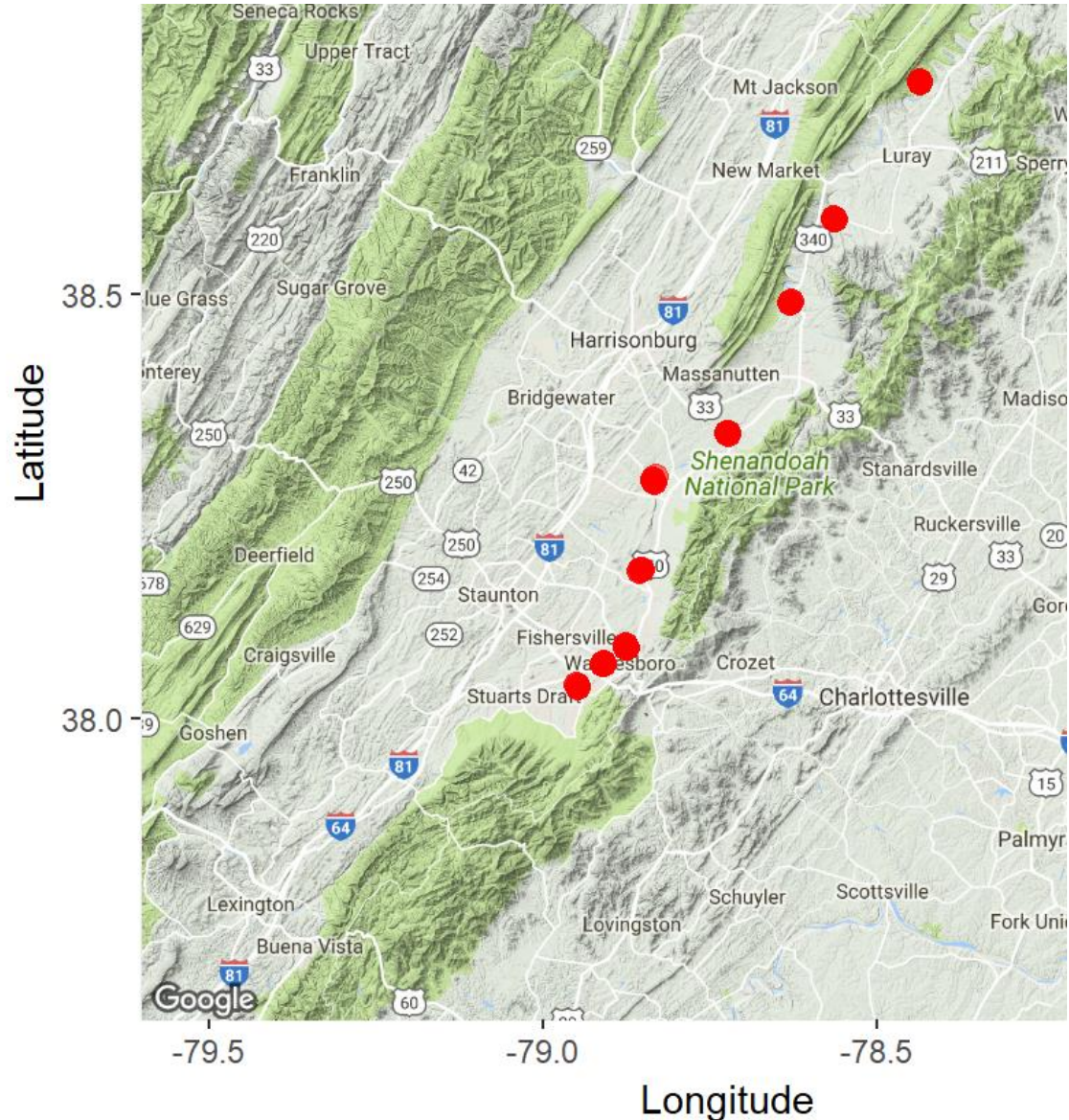
22.0

31.0

50.0

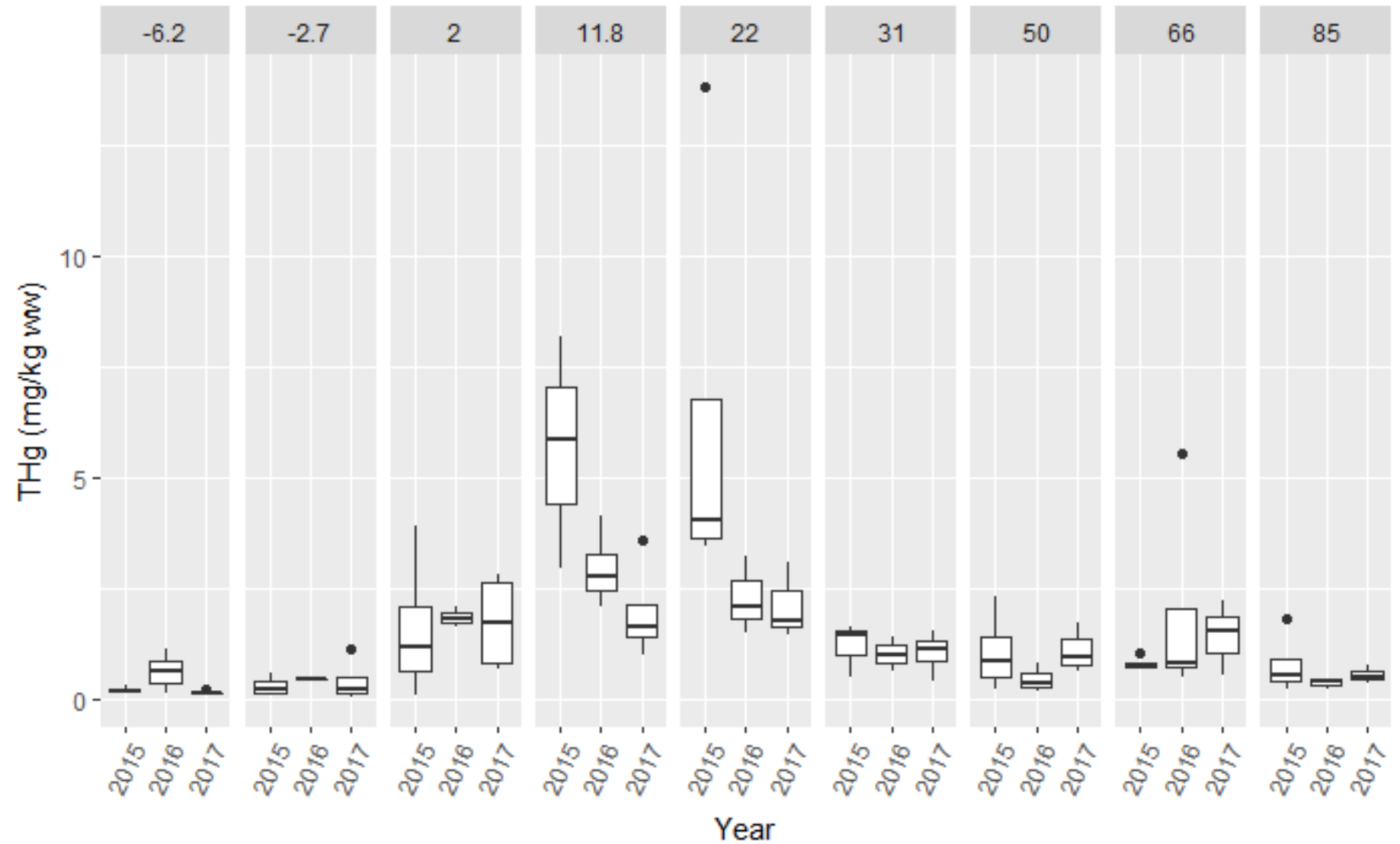
66.0

85.0



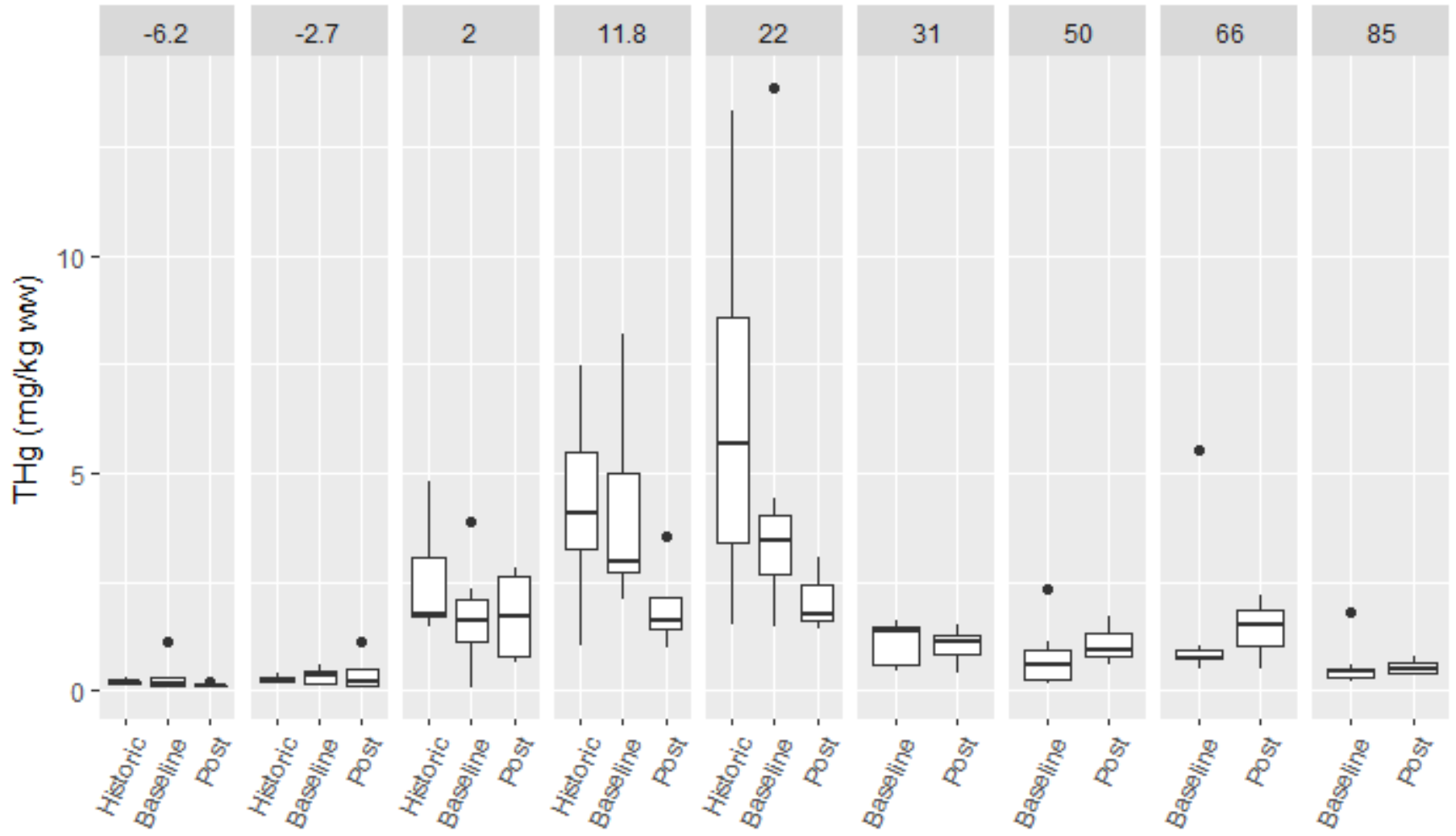
Carolina Wren Blood Hg

2015 - 2017



Carolina Wren Blood Hg

Historic / Baseline / Post IM





Thank you!



Acknowledgements

Mike Liberati

and

Ralph Stahl

DuPont Corporate Remediation
Group

E.I. DuPont de Nemours and
Company

Josh Collins

and

Scott Gregory

AECOM

South River Science Team
US Fish and Wildlife Service



Dan Pancamo

